

AI-Powered Solutions

What Is Artificial Intelligence?

AI is the simulation of human intelligence by computer systems, enabling them to perform tasks that typically require human reasoning, learning, and decision-making. In the context of Model-Based Systems Engineering (MBSE), AI enhances productivity and decision-making by automating analysis, detecting patterns, and providing intelligent recommendations throughout the systems engineering lifecycle.

Why AI Matters

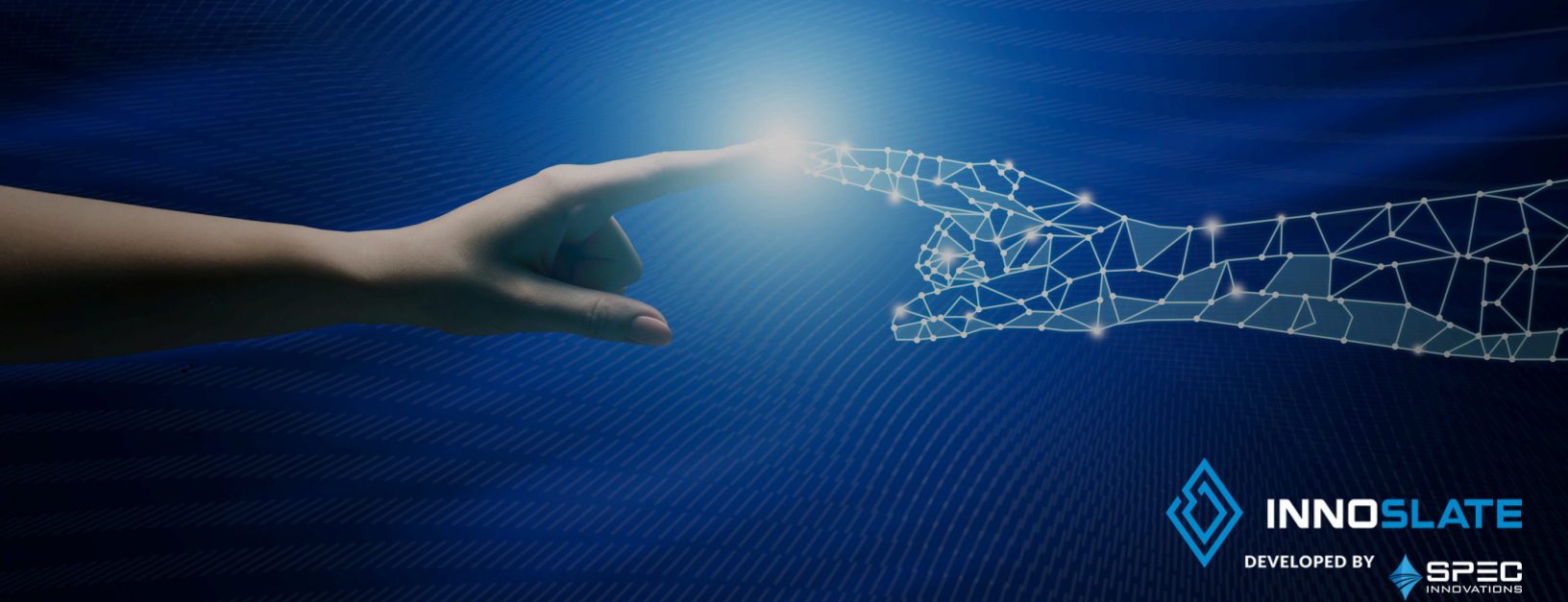
- **Requirement Quality Assurance:** NLP checks requirements for clarity, completeness, consistency, designability, traceability, and verifiability. Identify vague or unverifiable language like “fast” instantly.
- **Project-Wide Issue Detection:** Run over 60 heuristic checks for duplicates, orphan entities, and relationship errors, displayed via the Intelligence View Dashboard.
- **Seamless Traceability:** AI highlights missing or incorrect links in traceability matrices, helping you fix them efficiently.

The Innoslate Advantage

Natural Language Processing (NLP) is a branch of Artificial Intelligence that allows a computer to understand text in a similar manner as humans. Innoslate uses NLP to increase project quality, improve requirements, maintain parent-child relationships, find errors in diagram structures, and much more. Your team will be able to develop high-quality projects that are easier to verify and validate.

Why Choose SPEC Innovations?

- **Secure AI:** Innoslate integrates Ask Sage for secure generative AI; your sensitive data stays controlled and compliant.
- **Continuous Innovation:** Innoslate is packed with AI-powered features that evolve with your needs.
- **End-to-End Integration:** AI is baked into your existing MBSE tools—modeling, simulation, risk, requirements—not bolted on and fragmented.



Innoslate's Intelligence Drives Results

| Feature | Benefit |
|---------------------|---------------------------------------------------------------------------------------------------------------------------------------------------------------------------------------|
| Test Case AI | Automatically generate test cases from system requirements, all traceable back to those requirements. |
| Risk AI | Identify schedule, cost, and technical risks, plugged directly into the Risk Diagram |
| Translate AI | Translate project content across 17 added languages, preserving structure and context |
| Summarize AI | Generate concise summaries of long documents or reports, keeping teams aligned without sifting through pages. |
| Text Prompts AI | Get context-aware writing suggestions for requirements and documentation to streamline content creation. |
| Image Generation AI | Create visuals and diagrams from text prompts to boost understanding and clarity of complex system concepts. |
| Quality Checker | Automatically analyze your requirements for clarity, completeness, consistency, and verifiability, helping teams catch errors early and ensure high-quality, actionable requirements. |

Key Benefits of AI Integration

- **Reduce Risk:** Detect defects, gaps, and ambiguities early with automated intelligence.
- **Save Time & Cost:** Streamline manual work so teams can focus on engineering.
- **Improve Consistency:** Maintain structural integrity and traceability across your entire project consistently.
- **Enhance Collaboration:** AI tools empower every stakeholder to contribute smarter.