

SysML in Innoslate

What Is SysML?

The Systems Modeling Language (SysML) is an industry-standard, general-purpose modeling language for systems engineering applications. SysML enables organizations to create comprehensive, visual models of complex systems, capturing requirements, structure, behavior, and parametrics in a single, unified framework.

Why SysML Matters

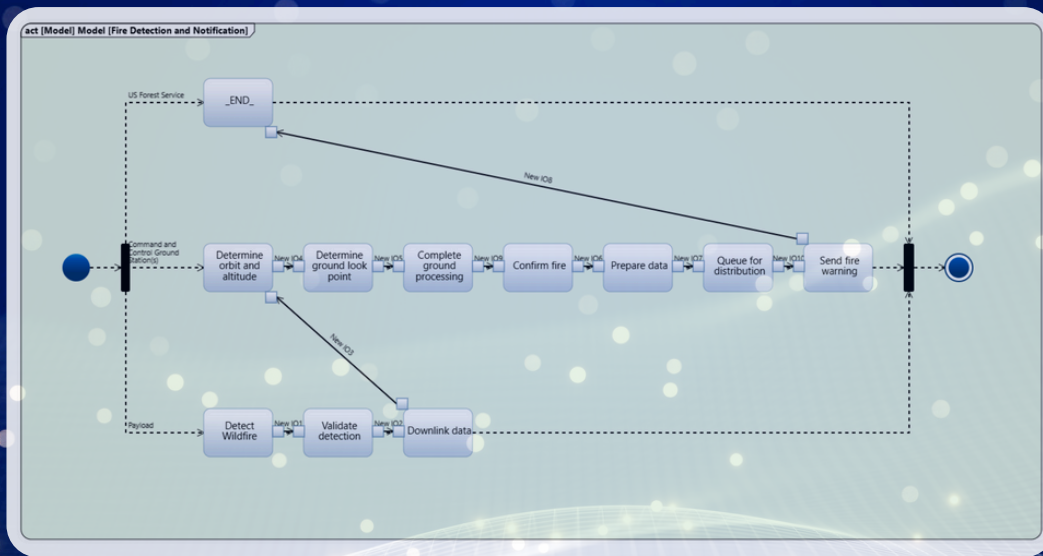
- **Visual Clarity:** Communicate system architecture and behavior through standardized diagrams, improving stakeholder understanding and alignment.
- **Integrated Requirements:** Link requirements directly to system models for full traceability and impact analysis.
- **Risk Reduction:** Identify design issues early by simulating and validating models before implementation.
- **Regulatory Compliance:** Satisfy industry and government standards with structured, auditable models.

SysML with Innoslate

Innoslate® by SPEC Innovations provides a robust, cloud-based platform for SysML modeling, seamlessly integrating model-based systems engineering (MBSE) with requirements management, simulation, and collaboration tools.

Key SysML Features in Innoslate

- **Comprehensive Diagram Support:** Create and manage all major SysML diagrams, including Block Definition, Internal Block, Activity, Sequence, Use Case, and Parametric diagrams.
- **Requirements Traceability:** Link SysML models to requirements, test cases, and verification activities for end-to-end visibility.
- **Collaboration:** Enable real-time, multi-user editing and review.
- **Simulation & Analysis:** Run simulations on SysML activity diagrams to validate logic and optimize system performance.
- **Automated Documentation:** Generate reports and specifications directly from your SysML models to support reviews and compliance.



How Innoslate Enhances SysML Modeling

Feature	Benefit
Full SysML Diagram Suite	Model every aspect of your system visually and intuitively
Integrated MBSE Environment	Combine SysML with requirements documents, V&V, and project management
Cloud-Based Collaboration	Work securely from anywhere, with version control and audit trails
Simulation & Validation	Test and optimize system behavior before physical prototyping
Automated Reporting	Save time and ensure consistency for reviews and compliance

Who Uses SysML in Innoslate?

- **Aerospace & Defense:** Model and validate mission-critical systems for reliability and compliance.
- **Government Agencies:** Ensure traceability and auditability for complex projects.
- **Commercial Enterprises:** Accelerate product development and reduce costs through early issue detection and process optimization.

Why Choose Innoslate for SysML?

- **Unified Platform:** Integrate SysML with requirements, simulation, and project management in one tool.
- **Ease of Use:** Intuitive interface and guided modeling accelerate adoption and productivity.
- **Proven Expertise:** Developed by leaders in systems engineering and trusted by organizations worldwide.

Ready to Experience SysML in Innoslate?

Schedule a demonstration:

<https://specinnovations.com/schedule-a-demo>